



Communities In Motion *Blueprint for Good Growth*

Preferred Growth Scenarios
March – April 2005





We Are Here Today to:

- Provide you with information about CIM/BGG and why these projects are important
- Present two preferred growth scenarios
- Hear your opinions about the two preferred growth scenarios



WHY?

Growth in the six county region!

Regional Population

502,000 → 923,000

Employment

258,500 → 451,000

**Equals two more
Boise Cities or
three new
Canyon Counties**



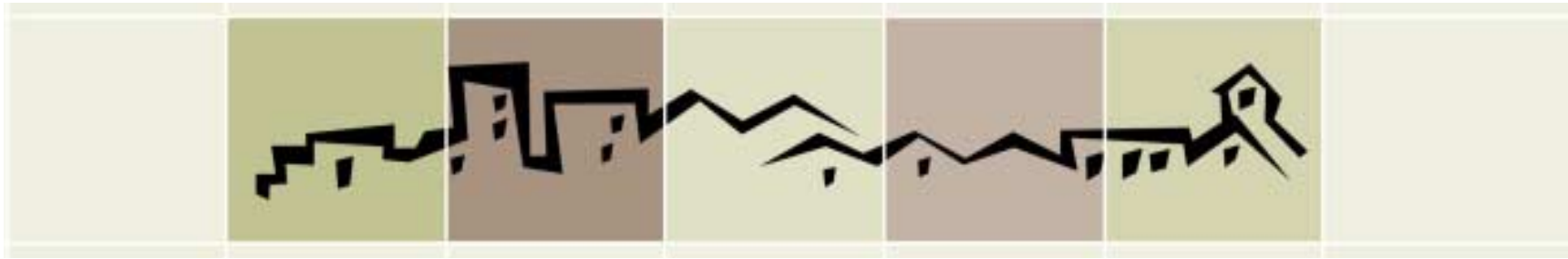
Anticipated Growth Means

- Increased traffic
- Increased demands for utilities and services leading to:
 - Major deficiencies
 - Fiscal impacts
- Increased need for new schools and other public facilities
- Increased land use conflicts



Potential Growth Problems

- Decline in existing built-up areas
- Degradation of the environment
- Drain on energy resources
- Strain on fiscal resources
- Deficiencies in public facilities
- Overburden of transportation facilities
- Loss of hillside and habitat areas



Communities In Motion

Communities in Motion is a six-county, 25-year plan that will address issues on the major transportation system, evaluate the needs for future corridors serving regional needs and address the effects of growth on transportation needs. The counties involved are Ada, Boise, Canyon, Elmore, Gem and Payette.



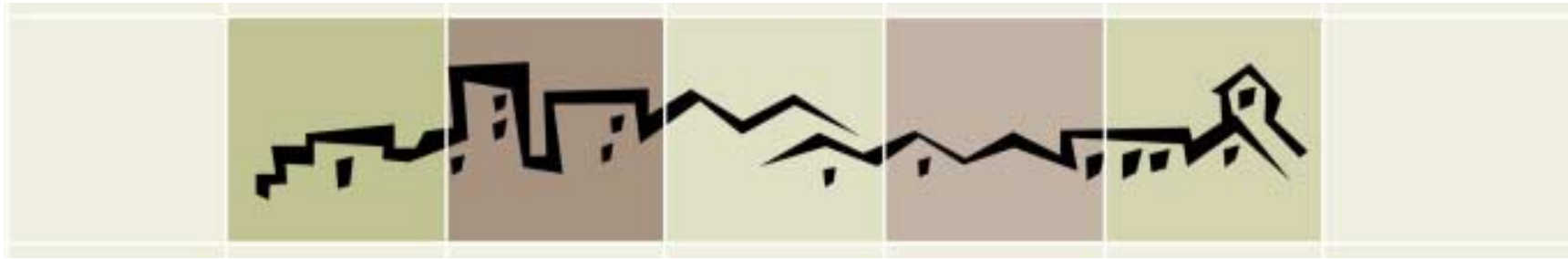
Blueprint For Good Growth

Blueprint for Good Growth will coordinate comprehensive plans and land use ordinances within Ada County, and propose local strategies to achieve shared growth goals.



CIM and Blueprint

Both *Communities in Motion* and the *Blueprint for Good Growth* are coordinated to ensure consistency between the resulting projects.



CIM/BGG Process

1. Develop a preferred growth scenario using public input (CIM/BGG)
2. Develop tools to guide selection of the preferred growth scenario (BGG)
3. Identify transportation needs to support the preferred growth scenario (CIM)
4. Develop Long-Range Transportation Plan (CIM)



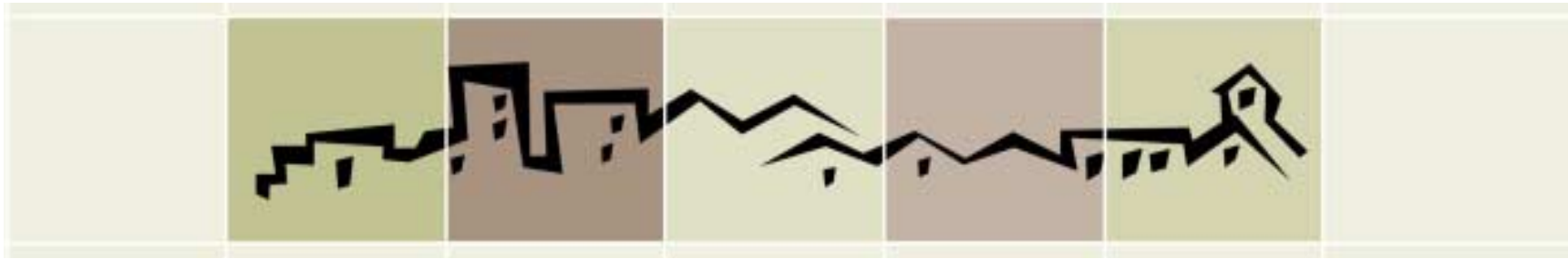
Importance of Planning

- Guide growth so it benefits our region.
- Agree to a preferred growth scenario to develop a meaningful 25-year long-range transportation plan.
- Develop a toolbox of regulations and other strategies to help Ada County and its cities achieve the preferred scenario.



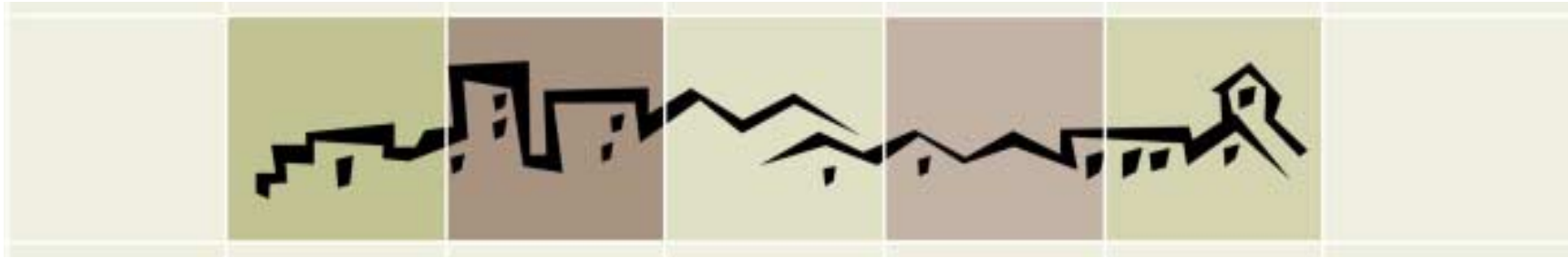
Importance of Scenarios

- Compare various ways growth can occur
- Understand differences between our choices while focusing on a common goal
- Manage land uses that support an efficient transportation system
- Develop a transportation system that matches a good land use pattern



Scenario Development

- **Fall 2004** –Developed initial scenarios
- **Nov. 2004** –Public workshops developed three more scenarios
- **Feb. 2005** –Public workshops focused on transportation systems
- **March 2005** – Scenarios presented to the COMPASS Board
- **Ongoing** - Further refine scenarios by combining favorable features



General Guiding Principles

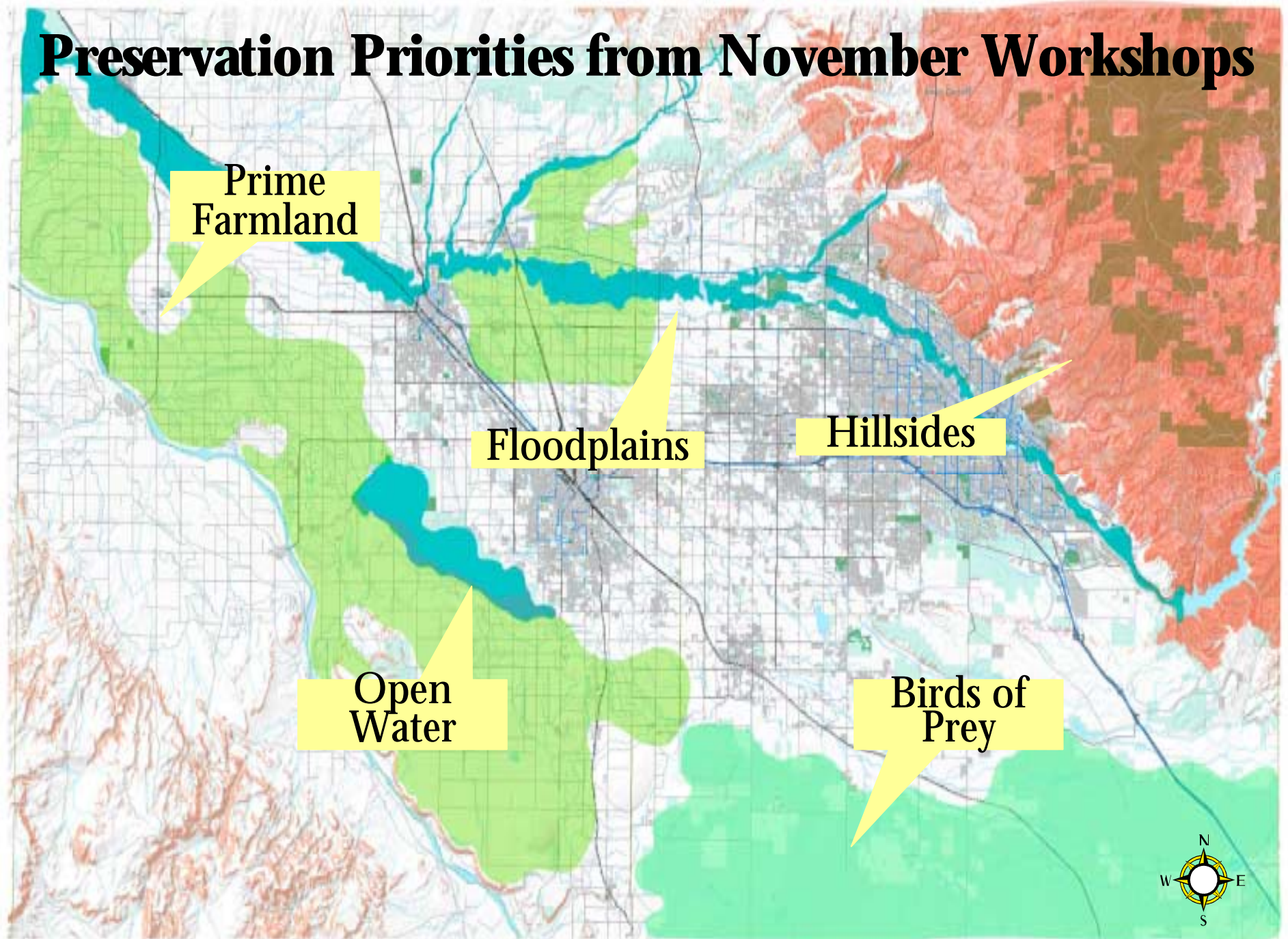
- Every community should plan for growth and share in the benefits and costs
- Facilitate growth in cities and areas of impact that efficiently uses public infrastructure
- Promote economic vitality and housing choices for all residents, while retaining our natural beauty



General Guiding Principles

- Support a successful central city to maintain our regional economic health and vitality
- Coordinate transportation and land use decisions to support travel choices

Preservation Priorities from November Workshops





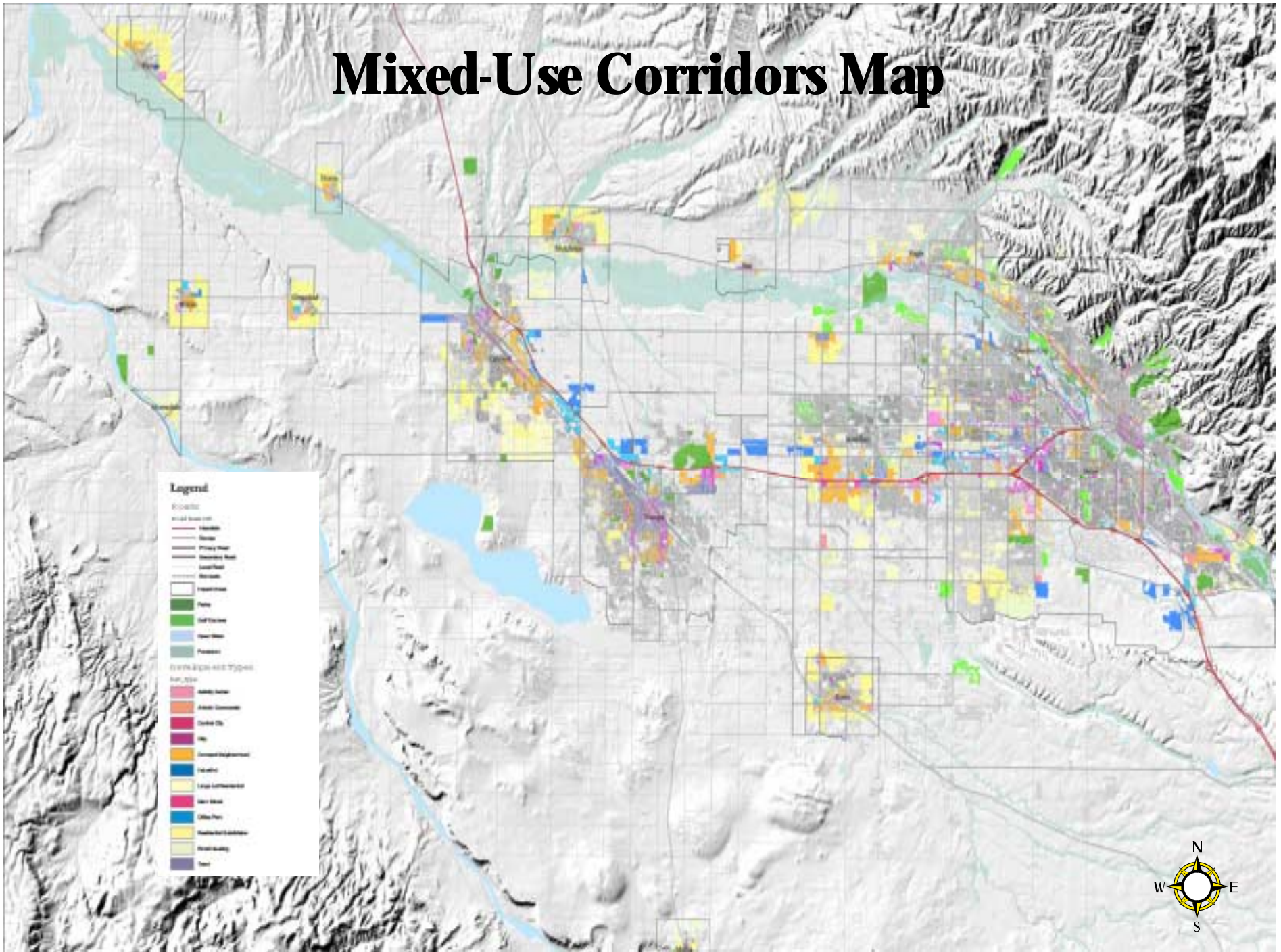
Two Preferred Scenarios

The COMPASS Board narrowed the six scenarios to two preferred scenarios:

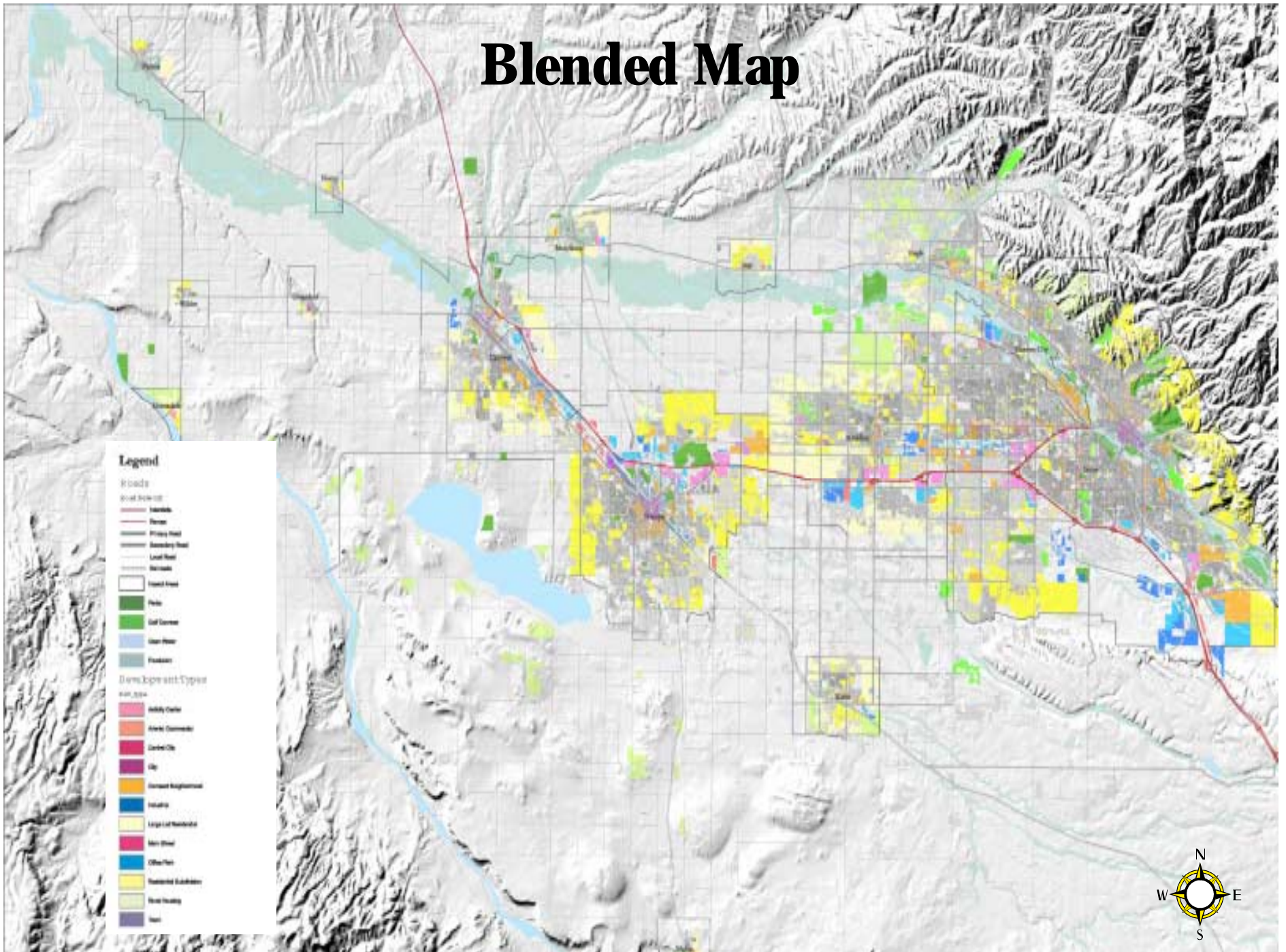
- Mixed-Use Corridors
- Blended (Satellite Cities)

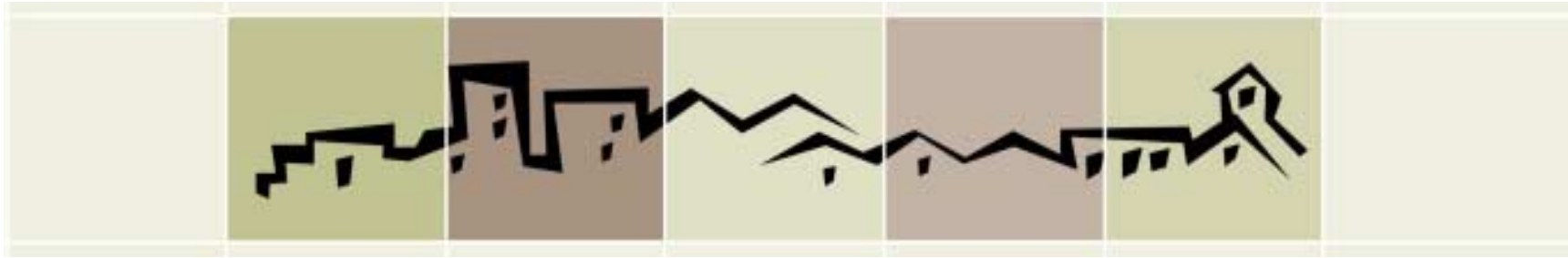


Mixed-Use Corridors Map



Blended Map





Attributes of Both Scenarios:

Promote quality of development patterns by having:

- Less land consumption than trend
- Greatest potential for preservation of open space
- Jobs and services closer to neighborhoods



Attributes of Both Scenarios:

Provide greater housing choices, including:

- Single-family homes
- Condominiums
- Affordable housing opportunities
- Small-lot homes
- Duplexes, town homes and apartments



Attributes of Both Scenarios:

Promote quality of transportation patterns by having the:

- Least congestion
- Less travel delay
- Shorter trips to and from work, shopping, entertainment and parks



Attributes of Both Scenarios:

Promote quality of transportation options by offering:

- More opportunities for transit
- More opportunities for walking and cycling
- Better coordination between land use and the transportation system



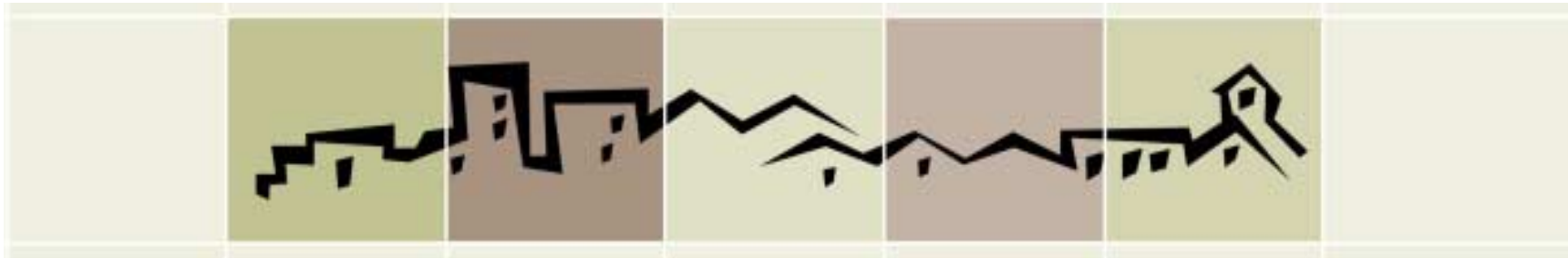
Scenario Comparisons

Mixed-Use Corridors	Blended
Less consumption of new land	Greater consumption of new land
Regional housing split of 50% single family homes, 50% multi-family homes	Regional housing mix of 65 % single-family homes and 35 % multi-family homes



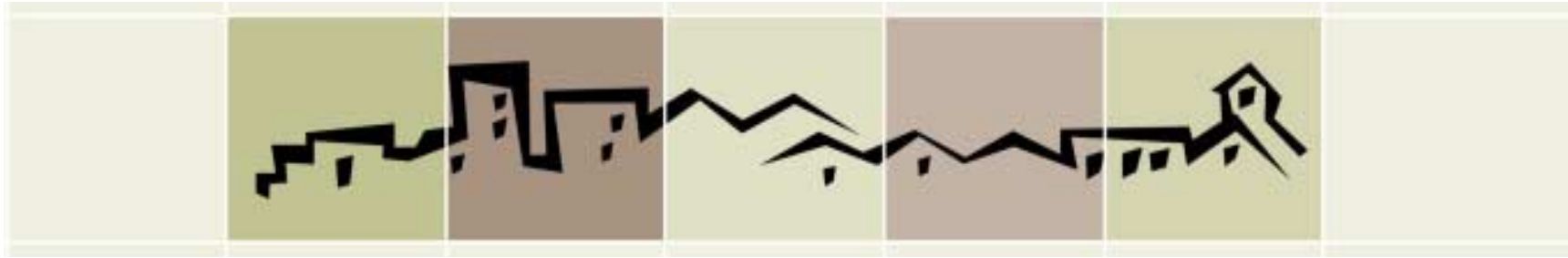
Scenario Comparisons

Mixed-Use Corridors	Blended
Land uses support transit and other travel choices	Less potential for transit
Most intensive development occurs along major transportation corridors	Less intensive development along major transportation corridors



Scenario Comparisons

Mixed-Use Corridors	Blended
High proportion of multi-family and other types of attached residences	Relatively high proportion of large lot residential development in areas of impact
Highest redevelopment in existing urbanized areas	Additional growth in existing small communities



Implementation

Implementing a preferred growth scenario will ask communities to:

- Develop and enforce regulations, inter-agency agreements and other growth tools
- Fund capital improvements (e.g. transit, trails and other facilities)
- Recognize market forces play a role guiding development



Implementation

Implementing a preferred growth scenario will also ask communities to support:

- Public improvements and services
- Ongoing implementation and enforcement of policies

BGG will assist Ada County communities to develop unique community guidelines based on common regulations and land-use policies



What's Next

- Public Open Houses:
 - **Tuesday, March 29**, 4 to 8 p.m.
Boise First Community Center on Eagle Road
 - **Wednesday, March 30**, Noon to 8 p.m.
Hispanic Cultural Center of Idaho in Nampa
 - **Thursday, March 31**, 9 a.m. to 8 p.m.
Idaho Historical Museum in Boise (Julia Davis Park)



What's Next

- **April 2005** – COMPASS Board selects preferred growth scenario
- **May - July 2005** – Develop corresponding transportation scenarios
- **Aug. - Nov. 2005** – Develop *Communities in Motion* transportation plan and distributed for public review
- **May – Dec. 2005** – Develop local plan and code revisions by *Blueprint for Good Growth*



Closing

Thank you for your time and interest in
Communities in Motion and
Blueprint for Good Growth

Please help us by taking a minute to complete
our comment sheet

For more information:

www.communitiesinmotion.org

www.blueprintforgoodgrowth.com